



Specification

Clone: D3G7

Lot #: 20220808

Clonality: Monoclonal Antibody

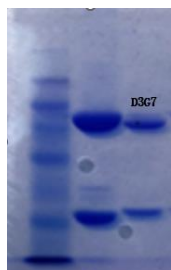
Storage Buffer :In 1×PBS, pH 7.2

Applications: ELISA, others unspecified

Source/Isotype: Mouse IgG1 Kappa

Concentration: 11mg/mL (BCA)

Purity: > 90% pure (SDS-PAGE)



Data Background

Serum amyloid A is an acute phase reaction protein with a relative molecular weight of about 12kD, mainly produced by liver cells, heart, skeletal muscle and other extrahepatic tissues. Human SAA includes SAA1, SAA2, SAA3, and SAA4. According to human expression, SAA1 and SAA2 genes synthesize SAA1 and SAA2 proteins, called acute phase SAA (A-SAA); SAA3 gene is not expressed in human body. The SAA4 gene synthesizes the constitutive SAA (C-SAA), which is expressed at low levels in the liver, and the concentration of C-SAA does not change with pathological (disease) changes. Therefore, in acute phase reaction, it is A-SAA that rises rapidly.

In acute reverse reaction, stimulated by interleukin-1 (IL-1), interleukin-6 (IL-6) and tumor necrosis factor (TNF), SAA is expressed in large quantities in the body, and its concentration can begin to rise within 3-6 hours of infection, and the concentration in the blood can rise to 100-1000 times of the initial concentration, with a half-life of about 50 minutes, and a rapid decline after the recovery of the disease.

In clinical diagnosis, the level of SAA is a sensitive index to reflect infectious diseases, which is helpful for the diagnosis of infection, disease assessment and prognosis.

Gene Information



UniProt ID: AAH07022.

Protein Name: Serum amyloid A-1 protein

VOTE

Storage: The product is shipped at 4°C. Upon delivery, please aliquot and store at -20°C -80°C for long term preservation. Avoid freeze/thaw cycles.